

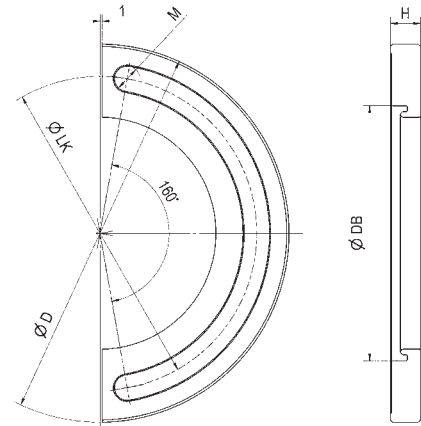
## Clamping Bracket for Surface/Mounted Clamping Modules

Black Nitrided



Clamping flanges are used to fasten raised/mounted clamping modules on the machine table. See pages 56–57.

- Special clamping flanges for various T-slot tables
- Clamping flange and housing manufactured as a single piece



### Stainless Steel

Part Number	Size	Pieces Per Module	ØD	ØDB	H	ØLK	M	g
426825	10	2	114	77.5	7.75	94	8.5	180
426833	20	2	164	110.0	13.00	136	11.0	400
426841	40	2	202	146.0	16.00	172	13.0	550

All linear dimensions in (mm)

## Flange Type Installation Modules with Centering and Cover Rings



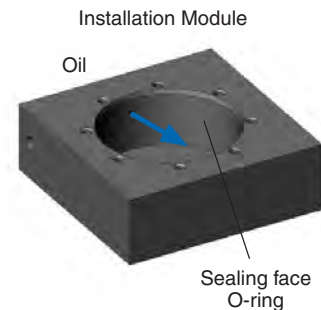
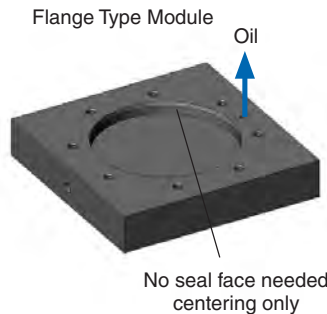
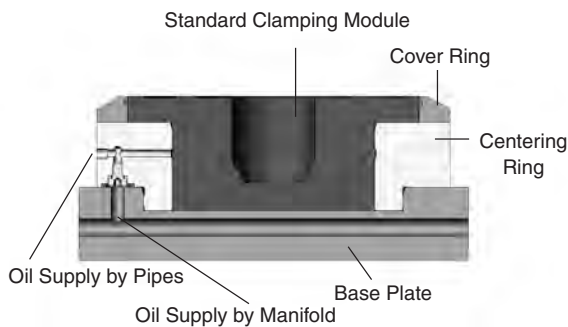
#### Features:

- Oil supply by pipes or manifolds
- Integrated centering
- Provided as assembled unit

#### Benefits:

- Simple design and manufacturing of adaptor plate
- Weight saving due to less thickness for adaptor plate
- Easy to adapt to existing mounting angles and cubes

### Installation comparison



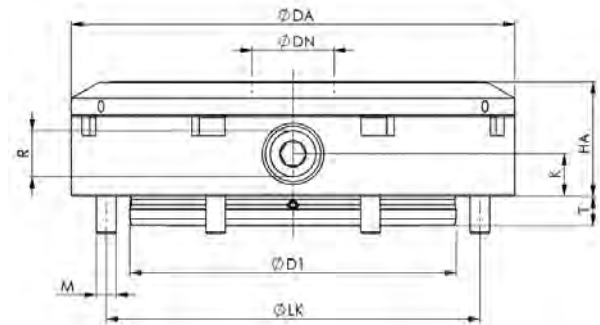
QUICK CHANGE FIXTURING » ZERO POINT MOUNTING SYSTEM

## Flange Type Installation Modules with Centering and Cover Rings

### Hydraulic Release

Cover and piston hardened.

Repeatability < 0.005 mm (0.0002")



### Hardened Stainless Steel

Part Number	Size	Pull-In/Locking Force up to kN / (lbs)	Holding Force kN / (lbs)	Blow out	ØDA	ØDN	ØD1	HA	K	ØLK	M	R	T	Kg
480301	K10	10 / (2250)	25 / (5620)	Yes	100	22	67	24	9	90	M5	G1/8	5.9	1.35
480269	K20	20 / (4500)	55 / (12350)	Yes	136	32	100	35	13	124	M6	G1/8	8.9	3.76
480723	K40	40 / (9000)	105 / (23600)	Yes	180	40	120	45	15	163	M8	G1/8	11.9	4.97

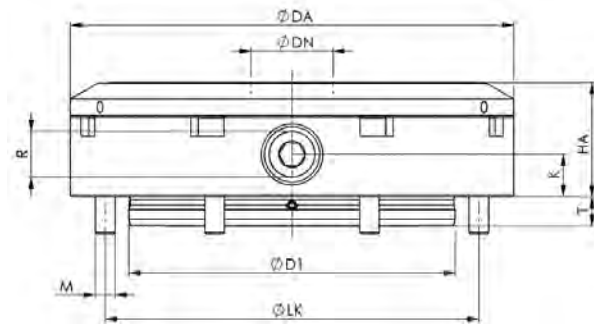
All linear dimensions in (mm)

**Note:** Combines features of the Threaded Module and Raised/Mounted module. Especially designed when installation space is limited and base plate or angle plate has relatively thin dimensions. The positioning of the module is simple and accurate when using the precision flange diameter. Hydraulic supply is possible by manifolds or pipes/hoses. Hydraulic supply and pressure is only needed for unclamping (min. 50 bar / 725psi, max. 60 bar / 870psi). The module is mechanically locked in the clamped position. The unique mechanical locking system results in virtually no vibration even with extensive machining forces. The hydraulic design has 1 connection: 1 x unclamping.

### Pneumatic Release

Cover and piston hardened.

Repeatability < 0.005 mm (0.0002")



### Hardened Stainless Steel

Part Number	Size	Pull-In/Locking Force up to kN / (lbs)	Holding Force kN / (lbs)	Blow out	ØDA	ØDN	ØD1	HA	K	ØLK	M	R	T	Kg
480327	K10	8 / (1800)	25 / (5620)	—	100	22	67	24	9	90	M5	G1/8	5.9	1.35
480285	K20	17 / (3800)	55 / (12350)	—	136	32	100	35	13	124	M6	G1/8	8.9	4.97
480749	K40	30 / (6700)	105 / (23600)	—	180	40	120	45	15	163	M6	G1/8	11.9	4.97

All linear dimensions in (mm)

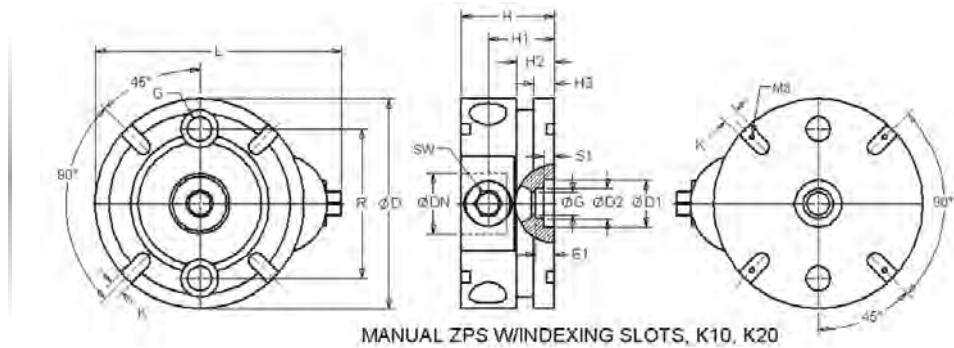
**Note:** Combines features of the Threaded Module and Raised/Mounted module. Especially designed when installation space is limited and base plate or angle plate has relatively thin dimensions. The positioning of the module is simple and accurate when using the precision flange diameter. Pneumatic supply is possible by manifolds or pipes/hoses. Pneumatic pressure is needed for unclamping ( min 8 bar / 116 psi, max 12 bar / 175 psi). For **clamping** process pneumatic pressure of min 5 bar / 75 psi, max 6 bar / 90 psi is required briefly in order to achieve defined pull-in force. The installation clamping module is mechanically locked in the clamped position. The unique mechanical locking system results in virtually no vibration even with extensive machining forces. The pneumatic design has 2 connections: 1 x unclamping / 1 x clamping.

## Manual ZPS

Ideal when Pneumatic and Hydraulic connections are not available

The manual ZPS modules provide locating and clamping with single bolt actuation. The indexing slots on the face of the modules allow workpieces to be indexed in 90° increments. Indexing slot plugs are available for applications where only specified slots are needed.

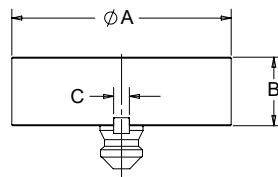
- Mechanical clamping and unclamping
- Quenched and tempered steel
- Repeatability 0.01 mm (0.0004 in.)
- Single Hex Drive Actuation
- Flexible Mounting & Placement
- Two Sizes Available – K10 & K20
- Eliminates Need for Air or Hydraulic Connection



Part Number	Size	Pull-in / Locking Force kN / (lbs)	Holding Force kN / (lbs)	Tightening Torque Nm / (ft. lbs)	D	D1 +0.01/-0	D2	DN	E1	G	H ±.01	H1	H2	H3	K F6	L	R	S1	SW	Weight (Kgs)
559775	K10	6 (1349)	25 (5620)	30 (22.1)	78	15	—	22	4,5	M8	32	22	—	—	8	93	50	—	10	1.03
564071	K20	10 (2248)	55 (12364)	30 (22.1)	112	25	16	32	10,0	M12	50	35.5	20	11	8	132	80	5,5	13	3.30

## Machinable Blanks

- Compatible with manual clamping modules and clamping modules with indexing feature
- Designed to be modified for accepting various parts and clamping systems
- Material: Low carbon steel or aluminum
- Includes (1) Zero Point Stud & (1) Indexing Key Installed

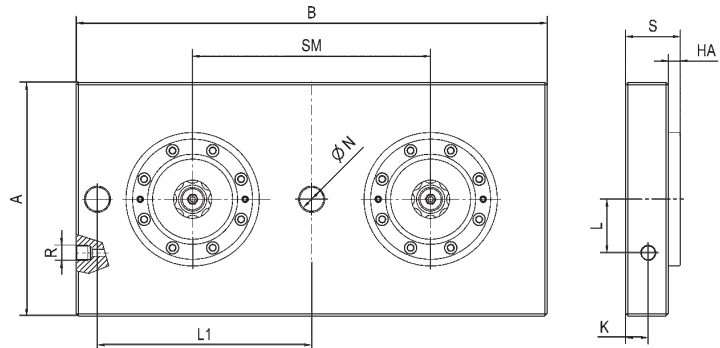


Part No. Aluminum	Wt. (kg)	Part No. Steel	Wt. (kg)	Pull Stud Size	A (mm)	B (mm)	C (mm)
300000	0.93	300001	2.7	K10	112	35	8h6
300002	1.4	300003	4.1	K20	138	35	10h6
300004	1.4	300005	4.1	K20	138	35	8h6

QUICK CHANGE FIXTURING » ZERO POINT MOUNTING SYSTEM

## 2-Way Clamping Station Hydraulic Unlocking

Repeatability &lt; 0.005 mm (0.0002")



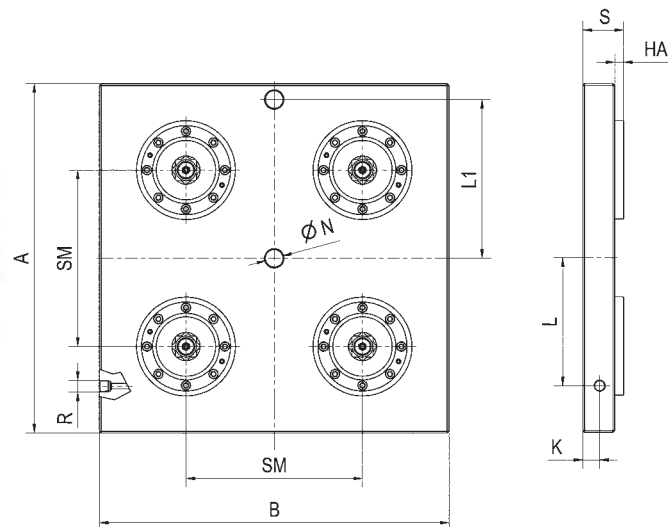
Part Number	Size	Pull-In/Locking Force up to kN / (lbs)	A	B	HA	K	L	L1	ØN	R	S	SM	Kg
303289	20	2 x 20 / (2 x 4500)	196	396	10	19	45	180	20	G1/4	46	200	21.9
303297	40	2 x 40 / (2 x 9000)	296	546	15	26	57	250	25	G1/4	61	320	59.5

All linear dimensions in (mm)

Note: On request, we can incorporate mounting holes to your requirements in the base plate. Other dimensions, gauges and number of clamping module layouts on request.

## 4-Way Clamping Station Hydraulic Unlocking

Repeatability &lt; 0.005 mm (0.0002")



Part Number	Size	Pull-In/Locking Force up to kN / (lbs)	A	B	HA	K	L	L1	ØN	R	S	SM	Kg
303321	20	4 x 20 / (4 x 4500)	396	396	10	18	148	180	20	G1/4	46	200	44.0
303339	40	4 x 40 / (4 x 9000)	546	546	15	26	217	250	25	G1/4	61	320	110.0

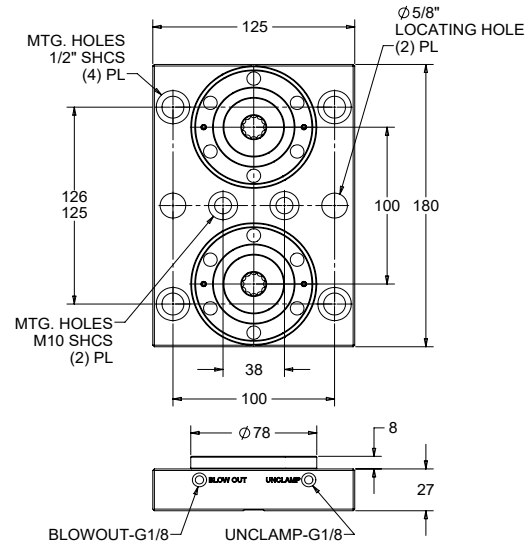
All linear dimensions in (mm)

Note: On request, we can incorporate mounting holes to your requirements in the base plate. Other dimensions, gauges and number of clamping module layouts on request.

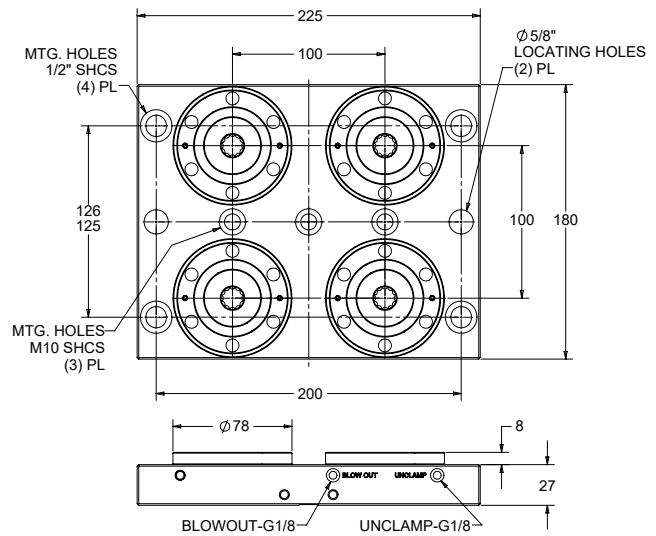
### Zero Point Subplates – K5.3

- Includes K5.3 low pressure pneumatic clamping modules installed
- Plate material: Fremax 15 Steel or Equiv.
- Includes porting for Blowout function
- Includes quick connect fittings
- Repeatability < 0.005 mm (0.0002")
- Custom designs available on request

Part No.	Wt. (kg)
30110	4.6



Part No.	Wt. (kg)
30111	8.4

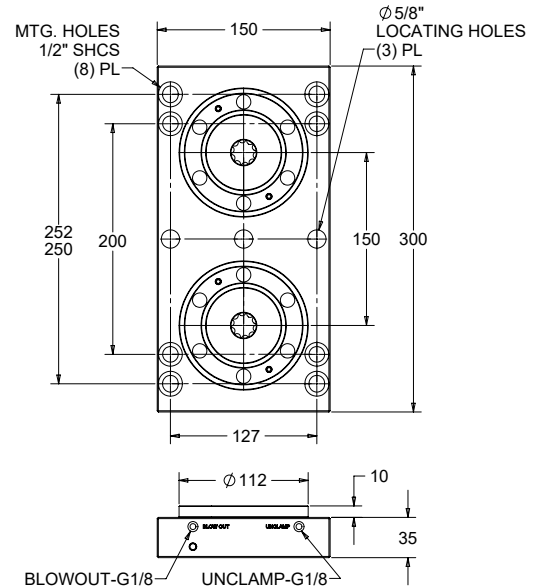


QUICK CHANGE FIXTURING » ZERO POINT MOUNTING SYSTEM

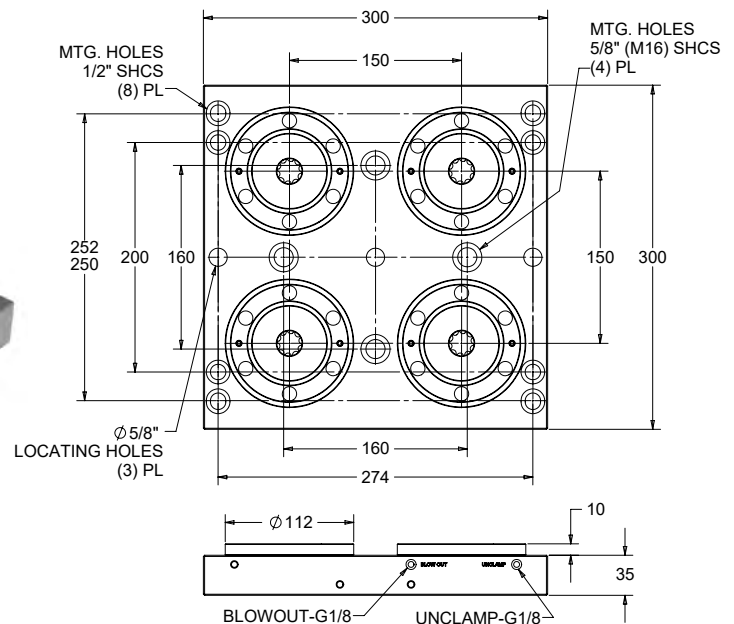
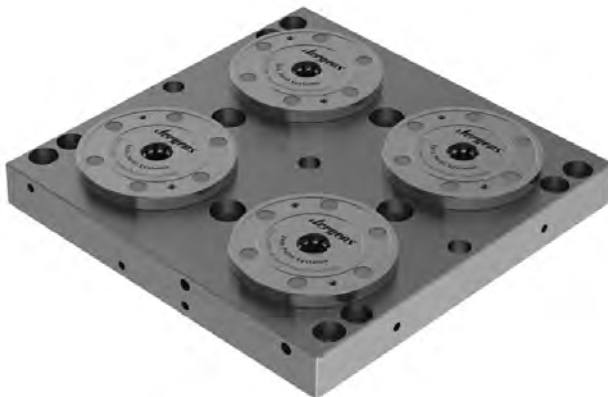
## Zero Point Subplates – K10.3

- Includes K10.3 low pressure pneumatic clamping modules installed
- Plate material: Frenax 15 Steel or Equiv.
- Includes porting for Blowout function
- Includes quick connect fittings
- Repeatability < 0.005 mm (0.0002")
- Custom designs available on request

Part No.	Wt. (kg)
30120	13



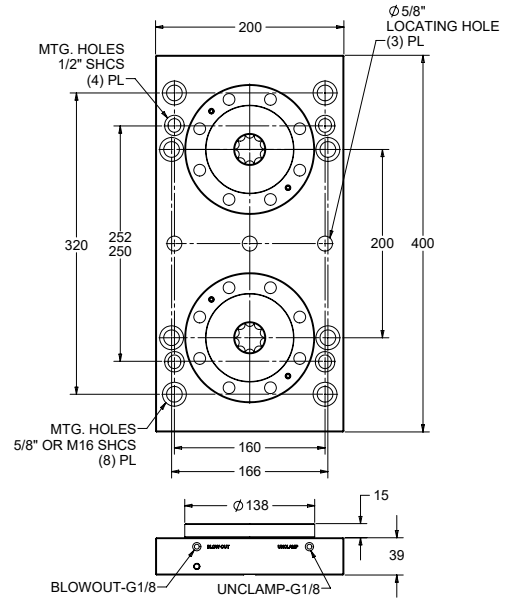
Part No.	Wt. (kg)
30121	25



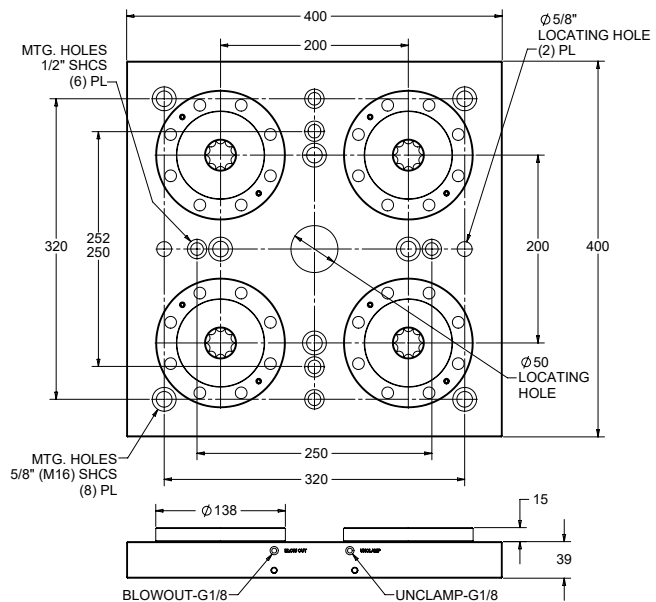
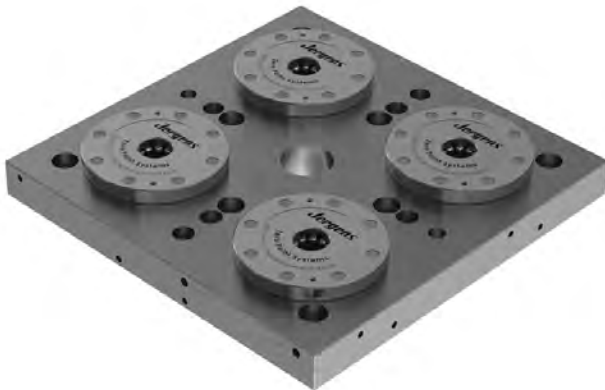
## Zero Point Subplates – K20.3

- Includes K20.3 low pressure pneumatic clamping modules installed
- Plate material: Fremax 15 Steel or Equiv.
- Includes porting for Blowout function
- Includes quick connect fittings
- Repeatability < 0.005 mm (0.0002")
- Custom designs available on request

Part No.	Wt. (kg)
30130	24



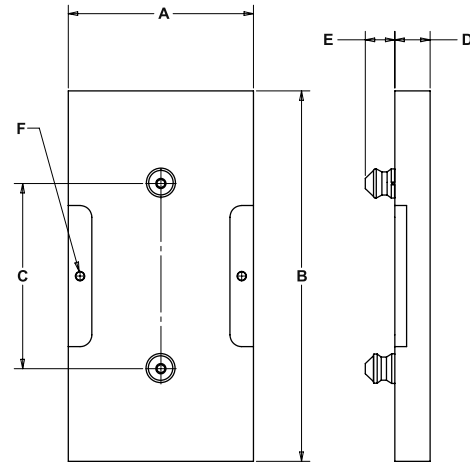
Part No.	Wt. (kg)
30131	48



QUICK CHANGE FIXTURING » ZERO POINT MOUNTING SYSTEM

## Zero Point Fixture Plates – 2 Stud

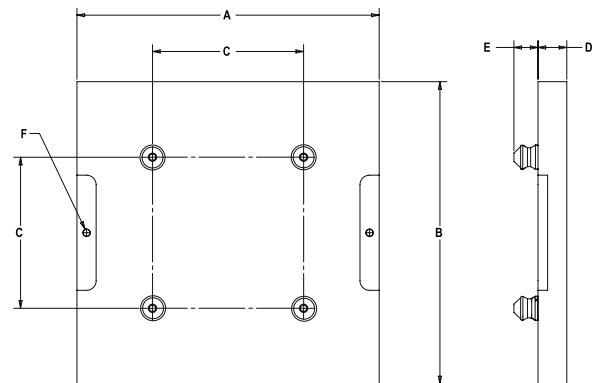
- 2 pull stud configuration suitable for 2 module subplates
- Includes pull studs installed: (1) Zero Point Stud & (1) Timing Stud
- Custom sizes available on request



Part No. Aluminum	Wt. (kg)	Part No. Steel	Wt. (kg)	Pull Stud Size	A (mm)	B (mm)	C (mm)	D (mm)	E (mm)	F (Lifting Holes)
30310-A	1.3	30310-S	3.4	K5	100	180	100	25.4	13.6	—
30320-A	3.1	30320-S	8.4	K10	150	300	150	25.4	22	M10 x 1.50
30330-A	8.2	30330-S	23.2	K20	200	400	200	38.1	32	M10 x 1.50

## Zero Point Fixture Plates – 4 Stud

- 4 pull stud configuration suitable for 4 module subplates
- Includes pull studs installed: (1) Zero Point Stud, (1) Timing Stud, & (2) Clearance Studs
- Custom sizes available on request



Part No. Aluminum	Wt. (kg)	Part No. Steel	Wt. (kg)	Pull Stud Size	A (mm)	B (mm)	C (mm)	D (mm)	E (mm)	F (Lifting Holes)
30311-A	3.1	30311-S	8.2	K5	225	180	100	25.4	13.6	—
30321-A	6.4	30321-S	17.6	K10	300	300	150	25.4	22	M10 x 1.50
30331-A	16.6	30331-S	47.4	K20	400	400	200	38.1	32	M10 x 1.50